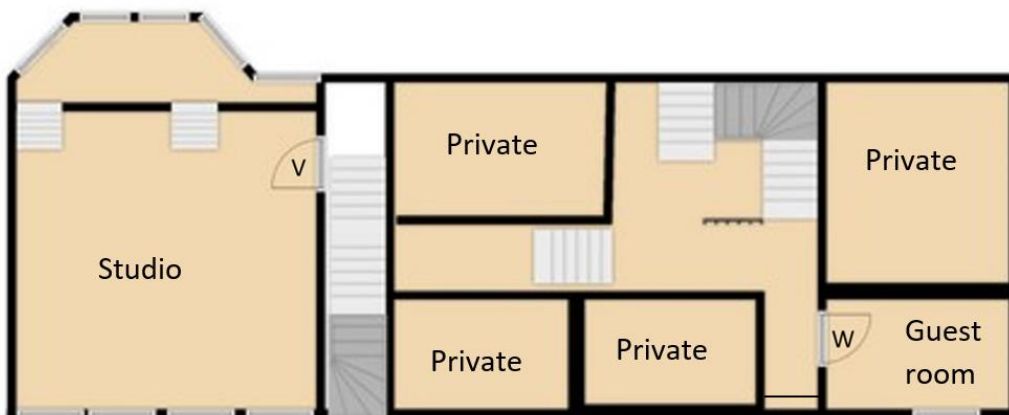
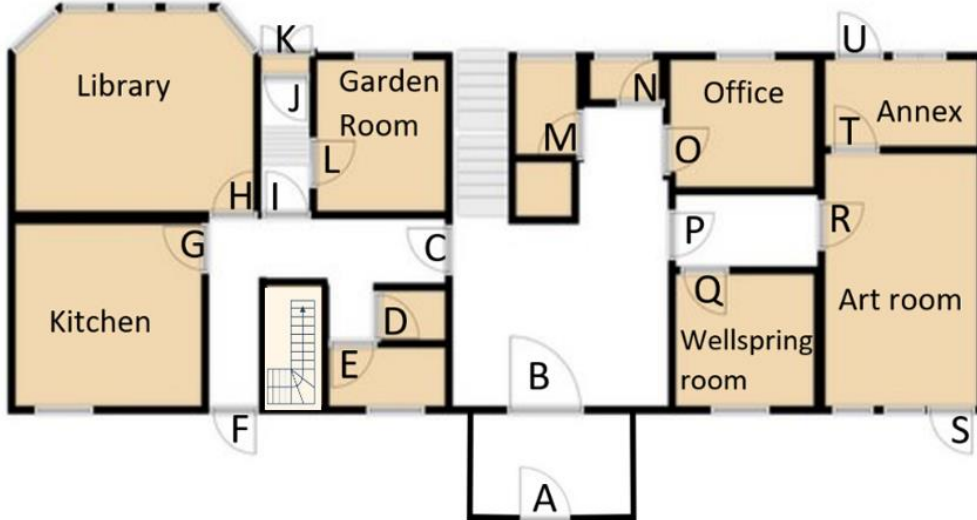




## The Salisbury Centre

### Salisbury Centre Building Accessibility Information

### Salisbury Centre Floor Plan





## The Salisbury Centre

### Door Dimensions

Door	Dimensions
A	920mm
B	990mm
C	840mm
D – All Gender Toilet	700mm
E – Level Access  All Gender Accessible Toilet	850mm
F - Emergency Exit	740mm
G	740mm
H	740mm
I	740mm
J	840mm
K – Exit to Garden	780mm

L	700mm
Door	Dimensions
M – All Gender Toilet	650mm
N – All Gender Toilet	610mm
O	840mm
P	860mm
Q	840mm
R	840mm
S – Emergency Exit	800mm
T	770mm
U – Exit to Garden	800mm
V	790mm
W	840mm



## The Salisbury Centre

### Stairs

Stairs Location	Number of Stairs
Studio	20 Stairs (two steps, one flight)
Guest room	17 steps
Garden via door K	5 steps (3 steps, 2 small drops)
Garden via door U	3 steps (2 steps, one small drop)
Lower Garden (permaculture garden and firepit)	3 steps or uneven slope